



**St. Andrews United Church
Norton, NB**



**Silas James United Church
Apohaqui, NB**



**Kings Kirk United Church
Belleisle Creek, NB**

Kings Kirk United Church

**APOHAQUI-NORTON-KINGS KIRK PASTORAL CHARGE
NEEDS ASSESSMENT**

Apohaqui-Norton-Kings Kirk Pastoral Charge Profile

The, **Apohaqui-Norton-Kings Kirk Pastoral Charge**, as we are called, is a rural three point charge of the United Church of Canada, located in southern New Brunswick. Centrally located, we are approximately an hour away from Saint John, Moncton and Fredericton. It is about a fifteen minute drive between each of our three church buildings. **Silas James United** in Apohaqui, **Saint Andrews United** in Norton, both along the Kennebecasis River and **Kings Kirk United** located in Belleisle Creek, close to the beautiful Belleisle Bay. For more information on economy and tourism see: www.new-brunswick.net and www.tourismnewbrunswick.ca/Home/Destinations/Hometowns/Sussex.aspx

At present, we have an eighty percent time minister and we hold two services a week most Sundays however we usually come together for special services and fellowship about once a month. On these weeks, we would just have one service on the Charge and we rotate the location. The total number of supporting households is 65.

Our Charge has a **Fun and Fellowship** committee which looks after organizing about four different activities throughout the year for the whole Charge that involve fun, fellowship and community awareness. Some of the activities held have been a presentation on an orphanage which a local family has taken on supporting and rebuilding, a gardening seminar, a basket social, a nature walk to the local ice caves, talks from missionaries, summer picnics, variety shows and an evening campfire service. We have also been able to raise some funds for local charities during our events ie; Paws and Whiskers Cat Sanctuary, local food bank, Mission and Service fund etc.

The **Official Board** of our Pastoral Charge has representation from all three churches and meet four times a year to report on church activities and look after the business of the Charge.

The **Charge Session** consists of the Elders from each point. This group, along with the Minister meets approximately four times a year and is responsible for all matters pertaining to worship and the Christian life of our Charge.

There are **Trustees** in place in each church which look after the buildings of the Pastoral Charge and are also responsible for pertinent information relating to church property.

Each church has a **Board of Stewards**, that look after the financial needs and fundraising. They have also come together and met as a group to organize some Charge fundraisers in the past. This is dependent on the need.

The **Mission and Service** representative for the Charge looks after the offering donated to the Mission and Service fund and provides information regarding the ways our donations are used. At each Sunday service we take time to do the “Minute for Mission” reading to keep our congregations aware of how this is put to use around the world.

The **Ministry and Personnel** Committee is very important to both the minister, church volunteers and the Pastoral Charge.

The **Central Treasurer** for our Charge is responsible for receiving allocations required by the charge to meet monthly obligations as per the budget. The treasurer reports to Official Board and assists with the budgeting process. We are very fortunate to have a very capable and knowledgeable person doing this position.

We have two **Presbytery Delegates** who attend most of the Saint John Presbytery meetings and report back any issues, upcoming events and concerns.

Recently, the JNAC committee distributed two questionnaires to the congregation – the first one dealt with personal relationship to “church”. The second had three parts – mainly on the future of the charge and are attached in Appendix 1. We do have great concern for our churches. We are an aging congregation, with big hopes for the future.



Silas James United Church

Our Mission Statement

Our Congregation, the Silas James Memorial
Would like to work toward having a church
Where love is prevalent:
Love of Christ first, then love to encompass all
And
To provide an atmosphere where all are welcomed
And encouraged to use their God-given talents
So that our church may grow and prosper
And
Our love overflow into the community.

Amen.

The village of Apohaqui is on the Kennebecasis River a short distance East of Norton. The church was built under the pastorage of Rev. Silas James in 1881 and remained as a Methodist Church until 1927, when it was named Silas James (U.C.C.) in his memory. The village is small and presently we have Apohaqui Elementary School with Internet Access, A Bed and Breakfast, a new recreational hall, playground and park. Apohaqui has ready access to all major highways.

Our Sunday School was disbanded in the spring of 2010 but we have two youth who attend church services.

We are fortunate to have a pianist with a regular choir. Our Hymnal of choice is Voices United. Our regular attendance is fifteen to eighteen. Sussex is very near and offers co-ed sports, municipal swimming, and a great ski-hill (Poley Mountain).

For many years the U.C.W. has been a vital part of Silas James, their cooking and catering is appreciated throughout the area. Though the number of members has lessened, the group still caters at special times and provides financial support to Silas James.

Supporting households ten to twenty.

Stewards, Trustees and Session meet as needed.

St. Andrews United Church

Our Mission Statement:

Saint Andrew's Church in Norton

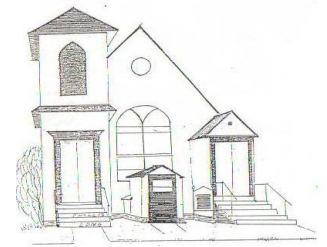
Is a Church which has Jesus as the cornerstone.

We are working together in love and unity

Committing ourselves and our talents

To the advancement of God's Kingdom.

Amen.



St. Andrew's United Church, Norton

St. Andrews United is located in the village of Norton located in Kings County, New Brunswick. It sits on the banks of the beautiful Kennebecasis River. Norton is minutes from the divided highway.

There are about fourteen hundred people inhabiting the Village and the surrounding area of Norton. It was incorporated as a village in 1966. It has a mayor and four councilors.

There is Norton Elementary School, Day Care, National Bank, convenience store, restaurant, Fire Department, post office, library, outdoor rink, Royal Canadian Legion and a special care home. There are 4 other churches besides St. Andrews.

We have fourteen active families and about ten families that we can call upon for donations or any projects we decide to do for fundraising.

St. Andrews has a full basement, kitchen and bathroom.



Kings Kirk United Church

Our Mission Statement

In Response to God's call, our purpose is to share
A commitment to Jesus Christ as Savior

Our vision is of two Congregations now one
Working together to be a church of Christ
Through
The teaching and preaching of the Gospel

We should consider ourselves all members of one body
That we are all teachers, prophets, workers and healers

What affects someone else also affects us.

Amen.

Our church, Kings Kirk United, is located in a rural farming area. The parish is made up of several municipalities. It was the people of the former Springfield and Belleisle Creek United Churches who came together to build this one new structure in 1986. Kings Kirk is wheelchair accessible.

We live in a very active and caring community. Springfield is the location of two schools; Belleisle Elementary which houses a community built pool and the Belleisle Regional High School which includes middle and high school. The community has also been fortunate to have a new community center built recently and new sports fields. There are also several golf courses, restaurants and convenience stores in the area. The beautiful Belleisle Bay is a great recreational area for boating, fishing and swimming. "Basement Players", is an active amateur theater group in our community that got it's start in our church basement. It has raised thousands of dollars for local charities.

A lot of people commute daily for work. There are also a few special care homes in our area and visiting our seniors and shut ins has always been a priority.

Our congregation is small but mighty; we work hard together. We usually put on some suppers, breakfasts, and an auction each year. We would generally have approximately twenty people at worship each week. Our music is shared weekly between an organist, pianist and guitar player. We tend to use Voices United the majority of the time. Our church participates in events in the community such as World Day of Prayer, local Benefits and the High School Baccalaureate service.

We are always open to new ideas and creativity. We seek guidance and grounding as we try to fulfill our work in the community.

Kings Kirk has a basement, kitchen, bathroom facility.

We have thirty five supporting households

We hold unified board meetings every quarter.

Position Profile

The position identified by the Joint Needs Assessment Committee is for 50%.

Worship

- To conduct two services of worship per week; occasionally there may be only one service on the charge.
- To preach the Word, administer the sacraments, conduct weddings, funerals and baptism
- To preach relating the scriptures to modern – day issues and concerns
- To encourage lay and youth involvement in service
- To conduct seasonal worship (i.e. Christmas, Lent, etc.) as arranged in consultation with Session.
- To lead worship services at the Stewarton Church once or twice per year.
- Christmas Eve service, Easter service with an early morning breakfast

Pastoral Care

- Provide pastoral care regularly in hospitals, nursing homes, and special care homes
- Provide pastoral care to the sick and shut-ins on the charge and provide care and counseling to families and or individuals in need.
- Attend community events within the charge as able.

Christian Education

- To offer confirmation classes, as well as baptism and marriage preparation as needed.
- To offer instruction and guidance for members who assume positions of responsibility in the charge (i.e. elders, stewards, official board members)

As time permits

- To develop groups/workshops that will help us grow spiritually.
- To provide leadership and resource direction to lay members and volunteers.
- To assist, encourage and support Christian education and development for all ages.

Mission and Outreach

- To participate in ecumenical services as arranged in consultation with Session and other Clergy.

As time permits

- To have an active and visible presence in community activities, including social events, outreach and justice issues.

Administration

- To provide a draft copy of the bulletin for Sunday Service and work collaboratively with the secretary.
- To be present and active at meetings of the Official Board and Church committees.
- To assist with structural organization of the charge.
- To assist in completing the Annual Statistical Forms.
- To ensure that all paperwork required by the United Church of Canada is completed properly and church records maintained.
- To prepare reports, correspondence and congregational letters as necessary.
- To have time management and computer skills.
- To meet with Ministry and Personnel Committee
- To attend Presbytery and Maritime Conference
- To assist in committee work as a resource person.

Terms Profile

Salary	50 Percent time, 20 hours per week, commensurate with United Church of Canada Policy, up to category F, as well as associated benefits of pension, CPP, etc.
Housing	Housing allowance provided at 50% as set by Presbytery. Our preference is to have a minister live within our geographical area.
Vacation	In accordance with the manual and in consultation with the Ministry and Personnel Committee.
Education	Book allowance (50%) as stipulated by United Church of Canada, three weeks study leave including three Sundays to be arranged in consultation with Ministry and Personnel Committee.
Travel	As per United Church of Canada Policy; currently set at \$0.41/km, Minister to submit a travel log monthly
Office	An office is provided. Office equipment includes a computer with internet, photocopier, scanner and board room. Basic telephone costs and long distance charges related to ministry of the pastoral charge are covered. Volunteer secretarial support is provided for bulletins and annual reports, etc. Office hours are negotiable and work from home may be an option.
Moving Expenses	As per the United Church of Canada

Congregational Questionnaire

The JNAC would like to thank the congregations for their responses to our questions. Thank you.

Joan Doherty, Doreen Rankin, Evelyn Douthwright, Jim Gilchrist, Shirley Braman, Karen Jonah-Brown and Dawn Ellen Wedge.

Here are the results. Keep in mind this is a summary of the answers given.

1st questionnaire: What do I love/enjoy about my church.

The responses:

- Community and sense of family among the people of our church and charge.
- Love the church, but worried about closing
- Warm personal atmosphere the congregation is small and close knit.
- Friendly atmosphere and concern for one another, who can work together and do great things (2)
- The minister, social bit and sermons are always good and easy to understand. (2)
- Fellowship and caring and fulfilling our purpose that God sets down for us. (3)
- Church is a quiet place where we renew our faith and church family feelings.
- Sad to see all the pews empty (2)
- It feels like home, very comforting, relaxing and you can be yourself, you don't have to be someone else to fit. Down to earth we have a good ministry.

2nd questionnaire: We had 34 responses.

1) The JNAC needs a clear direction on the level of ministry we are looking for:

Full time	100%	40 hours	___5___
What we Have now	80%	32 hours	___25___
Half time	50%	20 hours	___0___
Undecided or not marked			___4___

The Question was asked in the fall. After the annual reports, it was determined we needed to look at 50%. Financially we can support 50% with the hopes of going up to 80% or 100%.

2) Other Pastoral Charges similar to ours have moved to a model of one congregation with multiple worship places. This would mean one service each Sunday, one week in Apohaqui, One week in Norton and one week in Kings Kirk and everyone going to every service.

Do you think this is a good idea?	Yes	___17___
	No	___16___
	Undecided	___1___

-50/50 split

Would you travel to other points?	Yes	<u> 28 </u>
	No	<u> 5 </u>
	Undecided	<u> 1 </u>

-80% will travel

3) In what direction do you want to see our church go and what realistic suggestions would you give for the future of our charge.

The answers to this are varied and some are as follows:

- Ideal 1 church, 1 service
- Ongoing Sunday School and more kids
- Growth and consistency
- One service, One Sunday at Each Church
- Kings Kirk Service each Sunday with Apohaqui and Norton having one service every other week.
- Church to stay open and more people
- Keep the minister for another year
- Congregation to be more happy and not just there.
- Choir
- Adult education program
- More outreach and community initiatives
- Keep one church active for 3 months
- Keep two churches operating each month
- Work more together
- Minister living in community
- Three churches to stay open as long as possible, but one service per Sunday if all are agreeable to travel.
- More advertising about Sunday School and Church Times.
- Make people feel uplifted and inspired
- Youth activities involvement.