

**JOINT NEEDS ASSESSMENT REPORT**

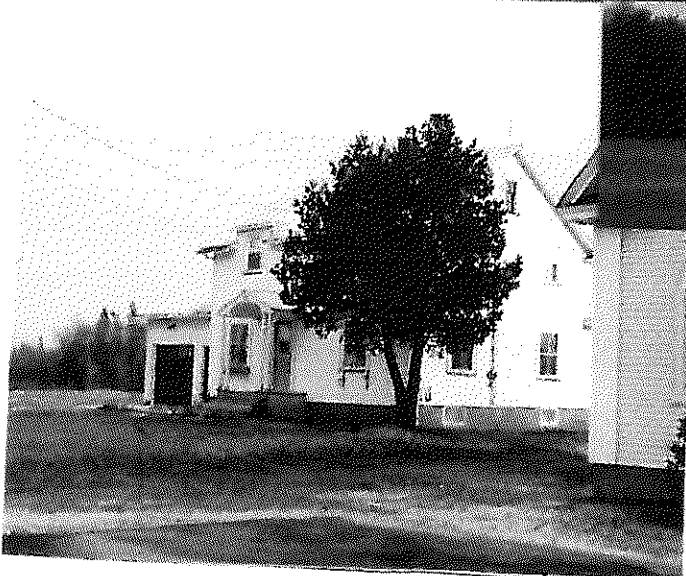
Of

**LAKE VIEW PASTORAL CHARGE**

Prepared for

**WOOLASTOOK PRESBYTERY**

2011



## LAKE VIEW PASTORAL CHARGE

### MISSION STATEMENT

Our mission is to nurture and encourage people to grow  
In faith and in their relationship with God, one another  
And all creation, so that we may engage fully in Life,  
Mission and Ministry of the Christian Church

### VISION

A Pastoral Charge that:

- Promotes truth, justice, peace, caring, sharing and respect for  
all in our community, our country and our world.

Inspires deeper faith

Motivates children, youth, and adults to be disciples of  
Jesus Christ and witness to God's love in their lives  
and in our world.

Joint Needs Assessment Report Page Summary

- Page 1 - Mission Statement
- Page 2 - JNAC - Page summary and Committee personnel
- Page 3 - Community Profile –  
(community size, location of pastoral charge, social & economic basis,)
- Page 4 - Ministry of Pastoral Charge Profile  
(congregation size, age demographic, context)
- Page 5 - Resources Profile  
( buildings, annual givings, etc.)
- Page 6 - Position Profile  
(full or part-time, focus of work, solo or team, etc.)
- Page 7 - Skills Profile  
(skills you would most value, seeking Ordained, Diaconal, or Lay)
- Page 8 - Terms Profile  
( range for salary, and benefits package)
- Page 9 - Recommendations
- Page 10 - 2010 Financial Statement
- Page 11 - Map of area.

\*\*\*\*\*

JNAC Committee Members

|                       |              |
|-----------------------|--------------|
| Rev. Steven Longmoore | Bessie Minty |
| Donna White           | Leona Harvey |
| Gailen Allen          | Marie Dyer   |

The pastoral charge committee members wish to thank Rev. Longmoore and Bessie Minty for their assistance and guidance in preparing this JNAC report.

## **Community Profile**

Lake View is a one-point pastoral charge serving the small rural communities of Glassville, Juniper, Divide, and Argyle. We are located east of Bristol on route 107. The church is located in the central community of Argyle, with the church hall across the road. The manse is in Juniper, approximately 10 km. from Argyle.

Lake View charge is a rural area, dependant mainly upon an agricultural and forestry economy. Unfortunately, we are experiencing an economic slump due to the mill closure in Juniper. However the Irving Tree Nursery in Juniper and the nearby mill in Deersdale are continuing production. Glassville and Argyle are agricultural areas. The main crop being potatoes. People also travel to the McCain Plant in Florenceville for work.

The Elementary school, grades K to 5, and Carleton North High School are located in Florenceville-Bristol ( formerly Bristol), a distance of 35 km. from Juniper. The Middle school, grades 6 to 8 also Florenceville-Bristol ( formerly Florenceville) is a 40 km. distance from the manse. Buses take the children to these schools. The high school has an active sports program. There is a N.B. Community College in nearby Woodstock. U.N.B. and St.Thomas universities in Fredericton, which is approximately a 90 minute drive from Juniper; also University of Maine Campuses in Presque Isle and Houlton, Maine, U.S.A., just across the border from New Brunswick, approximately a 90 minute distance.

There are convenience stores, post offices, recreation centers, ball fields and volunteer fire departments in both Juniper and Glassville. Medical facilities, dentists, optometrists, veterinarians, library, restaurants, arenas, swimming pools, large grocery stores, Lion's Club, Kinsmen, R.C.M.P. offices are located in the Bath, and Florenceville-Bristol area. The Upper River Valley hospital is in Waterville, near Hartland, just off the four-lane highway. The church camp, Camp Woolastook, in Kincardine, is approximately 50 km. from our charge.

There are other denominations in our pastoral charge area, namely Anglican, Pentecostal, Baptist, and Roman Catholic.

Our area is excellent for camping, fishing, hunting, and boating; Juniper being located on the Southwest Miramichi, and a lake in Argyle, where Ducks Unlimited built and maintains a dam, to provide a wildlife habitat. Summer trails for 4-wheelers, and in winter there is snowmobiling. There are three maple sugar operations in the area, some of which provide all day breakfasts and sleigh rides. The fall foliage attracts visitors every year.

## **Ministry of Pastoral Charge Profile**

We are a congregation dedicated and determined to keep our ministry alive. Our people are friendly and supportive of each other, working willingly together for our fund raising events.

Congregation size varies with seasons and weather conditions, average perhaps 26 -27, with persons of all ages. We are fortunate in having several musicians in our congregation, leading in singing hymns from Voices United. People from the congregation take part in reading scripture lessons, Mission & Service messages, and Session members do services when minister is on study leave or holiday. We have had successful M&P and Lay Supervision Team committees working with our student ministers. We have been a training charge for students many years. We have the traditional form of Church government with Session, Stewards, Official Board, and Trustees.

We support Sunday school, Mission & Service, Camp Woolastook, Food Bank, and Ecumenical events, such as World Day of Prayer service in partnership with the Anglican congregation. We place an emphasis on ministry to youth and the sick and shut-in.

We find fellowship in Sunday services, pot-luck dinners, and our many fund- raising events. We are challenged by changing times, socially, economically, and financially, but we are hopeful more people will feel called to worship with us, for more young people to take an interest and leading roles. As a faithful people, we pray that we will have the support to continue our ministry.

## **Resources Profile:**

Our buildings for pastoral charge ministry are the church and separate hall in Argyle, and the manse in Juniper. Due to previous amalgamation of the charge, two buildings are in the process of being sold.

The church in Argyle is a modest building, which had its beginnings in 1869 as a Union Church, being built by the co-operative efforts of people of different denominations at the time. In 1925, it became part of the United Church of Canada. This building can seat approximately seventy people. It has had various renovations over the years, and is environmentally efficient to heat electrically, having insulated windows and siding.

The hall across the road from the church, is an excellent place for Sunday school, church meetings, and social gatherings, seating approximately sixty persons. It has kitchen and washroom facilities, is wheel-chair accessible, and is often rented for private social events. A community ladies club has given support to the hall for many years, raising funds for maintenance, and donating to heating costs.

The manse in Juniper, located on the banks of the south branch of the South West Miramichi river, has an attached garage, an office, three bedrooms, 1-1/2 baths, kitchen, dining/living room, and sunroom. Appliances are electrical stove, fridge, washer, dryer. There is a combination of oil and electric heating. Furniture in the manse consists of a china cabinet and dining room set, organ, and various chairs. The office has basic office equipment including desk, chair, computer, printer, copier, filing cabinet, and bookcase.

We see our people, who are hard-working and faithful, who volunteer their time and talents, as one of our resources

Our proposed budget for 2011 estimates annual offerings at \$ 21,000.00 and fund raising of \$15,000.00, plus \$6,500.00 in transfers from the building fund, plus GST refund, minister's energy contribution, and 2010 year-end balance, to meet estimated expenses of \$46,000.00. We expect that by the end of 2011 our building fund will be at an estimated balance of \$2,000.00, thus no more transfers of funds. Our memorial fund balance is \$16.08. Some examples of our fund raising events are Music Nights in Argyle each month, Take-Out Dinner twice per year, suppers each spring and fall, an annual Auction, Yard & Bake Sales twice per year, plus catering wedding receptions, etc. as the opportunities arise. The 2010 financial statement is attached. These figures are based on a ¾ time ministry. Due to financial difficulties we are looking at down sizing our budget for future years. The necessary fund raising to meet the budget has become too much of a burden for our congregation, and there are no further funds available for transfers to general expense account.

### **Position Profile:**

We are seeking one half-time Designated Lay Minister, or half-time Student Supply, at 20 hours maximum per week

A person who likes to take part in the life and social aspect of the community would be welcome in our traditional rural community.

We seek a person called to rural ministry, a self-directed person to lead worship, coordinate youth education (Sunday School), and give pastoral care.

#### **Primary tasks:-**

Prepare and lead worship for one Sunday Service per week, with support from congregation by reading the Scriptures and Minutes for Mission. The Session takes responsibility for services when the Minister must be away on vacation or study leave.

Meet with the music person to select hymns for services.

Perform Communion, baptisms, weddings, and funeral services.

#### **Pastoral Care:-**

Visitation to nursing home and hospital. Significant illness or crises visitation as required. Conduct worship service at nursing home twice per year.

#### **Administration:-**

Attend Official Board, Session, and Annual meetings.  
Attend Presbytery and Conference meetings.

**Skills Profile:**

Lake View Pastoral Charge requires:-

One who speaks in a clear voice with plain English (no \$10.00 words)

Has a friendly personality.

Will be happy in a rural setting.

Who is willing to learn and grow in ministry.

Who is comfortable working with all ages.

Who has a prayerful presence in time of crisis.

Has good time management skills, self directed to prepare bulletins and lead worship.

Musical ability would be an asset, but not necessary.

**Terms Profile:**

Salary: As per the salary schedule.

Hours: Half- time is 20 hours per week.

Travel: \$.41 per km. – as per General Council Guidelines. Log is necessary. (excludes travel from home to work)

UCC Pension and Group Insurance: as per General Council Guidelines

Study Leave and Book Allowance: as per Guidelines.

Holidays: as per Guidelines - in consultation with M & P Committee

Sick Days: as per Guidelines – in consultation with M & P Committee

Bereavement and compassionate leave: as per Guidelines – in consultation with M & P

Manse: Provided by Pastoral Charge, plus cost of heating over \$500.00 per year

Telephone: Basic telephone service (\$75.00 per month) paid by charge, plus long distance that is pastoral charge related.

Secretarial: Volunteer help as required - annual reports, (bulletins if help required)

Office Equipment: Computer and printer, copier, filing cabinet, safe, desks, chair, bookcase. High speed internet service is available, but not paid by the charge.

Moving Expenses: Will be met by charge.

**LAKE VIEW PASTORAL CHARGE  
FINANCIAL STATEMENT 2010**

**INCOME:**

|   |                     |
|---|---------------------|
| Year 2009 Balance Foreward.....                 | \$ 1,488.30         |
| Envelope Offerings.....                         | 20,974.00           |
| Loose Offering.....                             | 420.03              |
| Minister's Energy Contribution.....             | 500.00              |
| HST Refund.....                                 | 713.89              |
| Donations- Haiti Relief.....                    | 280.00              |
| - Electrical Additions-Church & Hall.....       | 242.30              |
| - Other.....                                    | 220.90              |
| Transfers - From Memorial Fund.....             | 2,693.18            |
| - " Building Fund.....                          | 4,759.02            |
| Fundraising -(15,501.05 - 912.56 expenses)..... | <u>14,588.49</u>    |
| <b>TOTAL INCOME</b>                             | <b>\$ 46,880.11</b> |

**EXPENSES:**

|  |                  |
|--|------------------|
| Minister's Salary.....                               | \$22,905.72      |
| Minister's Travel.....                               | 4,282.45         |
| Supervision ( Travel ).....                          | 101.68           |
| Presbytery & Conference Allocations.....             | 1,783.00         |
| CPP & EI (Charge).....                               | 1,516.97         |
| Church Pension & Group INS.(Charge).....             | 4,417.33         |
| Copyright License.....                               | 119.00           |
| Book Allowance & Continuing Education.....           | 900.00           |
| Supplies (Bulletins, Toner, Paper, Books, ).....     | 455.91           |
| Conference Delegate (Lodging).....                   | 216.00           |
| Youth Conference Fees (raised by youth in 2009)..... | 630.00           |
| ADP Fees (Payroll).....                              | 255.82           |
| PAR Fees.....  | 13.50            |
| Postage.....   | 28.83            |
| Bank Fees.....                                       | 509.02           |
| To Haiti Relief.....                                 | 280.00           |
| H.S.T. Refund to Building Fund.....                  | 274.26           |
| Tuning Hall Piano.....                               | 175.00           |
| Electrical additions (church & hall).....            | 242.30           |
| MANSE -- Heating (Oil).....                          | 2,277.97         |
| Hydro.....   | 1,877.20         |
| Telephone.....                                       | 900.00           |
| Insurance.....                                       | 645.00           |
| Repairs (to drier).....                              | 97.80            |
| (to upstairs Bathroom plumbing).....                 | 683.01           |
| Snow Removal (8).....                                | <u>240.00</u>    |
| <b>TOTAL EXPENSES</b>                                | <b>45,827.77</b> |

NET BALANCE ..... = \$ 1,052.34

Eligible HST Refund = \$412.18

Submitted by Donna White, Treasurer  
Finance Committee