

UPPER LONDONDERRY PASTORAL CHARGE

United Church of Canada

DEC 16 2011

Debert United Church

**Erskine United Church
(Glenholme)**

Masstown United Church

**JOINT NEEDS ASSESSMENT
COMMITTEE REPORT
2011**

UPPER LONDONDERRY PASTORAL CHARGE

408 37 137

Joint Needs Assessment

2011

		Page
Profile #1	Community	3
Profile #2	Charge	7
Profile #3	Charge Resources	9
Profiles 4 + 5	Position & Skills	11
Charts		12
Profile #6	Terms	14

Prepared by: Rebecca Penney, Cheryl Teed, Laverne Morrison, Anne Richard, Christine Urquhart, Joy Reid, Glenda Kent, and Ruth Gamble

Profile #1

OUR CHURCH COMMUNITIES

Glenholme is a scenic community situated on the Folly River and close to Cobequid Bay. The population is approximately 160 people. Erskine United Church, a large, well-kept building, occupies the prominent location in the village.

The area was once an Acadian settlement. After the expulsion of the Acadians in 1755, it was settled by Presbyterians, mainly of Irish background. In 1769, the settlers invited the Rev. David Smith to minister to them. He arrived, from Scotland, in 1771, to become the first permanently settled Presbyterian minister in Canada. He ministered here for 24 years, until his death in 1795. The log church of early times was replaced by a frame construction church in 1794, and the present church was built in 1865.

Glenholme is home to a corner store, gas stations, family restaurant with truck stop, an antique store, a woodworking and refinishing shop, and two campgrounds. The community's children travel by bus to school. Those on the west side go to Great Village, then junior high in Bass River. Those on the east attend Chiganois Elementary in Masstown, then junior high in Onslow. All high school students go to CEC in Truro.

The area is covered for emergencies by the Great Village Fire Department. Health care services are available for those who need assistance to remain in their homes.

There are recreational facilities in the Hilltop Campground, and in the nearby larger communities. There are exercise classes, night classes, and a garden club in Great Village, five minutes to the west. The Wentworth downhill ski area is twenty minutes to the north. Twenty minutes to the east is the town of Truro, with recreation, education, medical and shopping facilities. Bass River, twenty minutes west, has banking and medical services.

Debert is a village of about 1671 people (2006 census) at the foot of the Cobequid Range adjacent to Belmont to the east, Masstown, Lower Debert and the Cobequid Bay to the south and Glenholme to the west. The village featured a large military base during World War II, and though the base is closed, the remaining infrastructure: former military housing, military buildings and airport continues to shape and influence village life. It has fostered the location of many businesses, as well as an influx of new homeowners and renters, all where the old military base had been located. Some of the larger businesses in the Debert Air-Industrial Park include a Sobey's warehouse, Home Hardware Warehouse, Kohler Windows, Kent Homes, Newmac Manufacturing. There are many smaller businesses such as Specialty steel, a trucking company, a Tim Horton's outlet with distribution centre, Inland Oil and Clean Harbours Environmental Services. Also located in Debert is the Wild Blueberry Producers Association of Nova Scotia (WBPANS).

The first church dates from 1850 and was briefly shared by both Baptists and Presbyterians. Each congregation built its own church: Presbyterians in 1879, Baptists in 1881. The Presbyterian church burned and was rebuilt in 1880 and, with the addition of a vestry is the current Debert United Church. A new independent church is located between an apartment development and a steel roofing business that occupies the former base recreation centre.

There are still a few farms in the Debert area, with land used primarily for grazing, hay and for low-bush wild blueberry production; but few residents work the land. Facilities at Debert include an active Royal Canadian Legion; the Debert Elementary School; a volunteer fire brigade whose building is used for many community activities; a Masonic Lodge which hosts regular gospel, country and bluegrass jam sessions; the Debert Flight Centre and summer gliding school; The Debert Military Museum; a Cenotaph; The West Colchester United Arena; Seniors' residences: The Meadows (for independent living) and Debert Court (offering total care); a nine hole golf course; the Pentecostal summer Bible camp; walking trails through the site of a paleolithic Micmac settlement. Services are provided by two garages, one with pumps; two general stores; a post office and a pizza restaurant, with more services in the Masstown area. The Cobequid Hills and Cobequid Bay offer recreation opportunities for fishing, hunting, walking and ATV-ing.

MASSTOWN (Population approximately 355) is a beautiful community within 15 minutes drive to Truro. Masstown is a place of history. The French Acadians settled here and had the first church where a resident priest held mass, hence our name, the town of the mass house, Masstown Village now Masstown. In March 1689 a grant of land around Cobequid Bay, from Noel to Economy, 12 miles wide and deep was granted as a Seigniorialship to Matthew Martin (the first European to be born in Acadie -1636) and called "Cobequid". The center of the community was "Cove D'Eglise" where the Masshouse, "St. Peter-St. Paul" was built in 1738. The Acadian parish is remembered with a cairn in front of the Masstown United Church. The first Presbyterian Church was of log construction and may have been built as early as 1767 and was later replaced by the present church in 1871. We are part of the Upper Londonderry Pastoral Charge, the oldest pastoral charge in Canada, established with a settled minister in 1771. This community also features an elementary school.

There are a number of businesses, large and small, located in our community: Masstown Market which encompasses retail shopping, a bakery, a restaurant, a gift shop, a liquor boutique, and a fresh fish market; Masstown Hardware; Motel and Gas Bar; heavy equipment companies; farmers; Truck Driving School; Accounting; Hairdressers; small berry and Christmas tree producer; etc. These businesses are very supportive of community functions.

We have a Community Park centrally located where there are picnic tables, sports field, water on the property. We hold Canada Day at the Park, Christmas Tree Lighting at the Park, and encourage home-owners to decorate and keep our community looking nice. We are very proud of our history and have some historical materials available.

The Onslow-Belmont Fire Brigade is five kilometers from the village. It has medical response; ice and water rescue capabilities and fire prevention programs.

There is a 4-unit seniors' complex, "Mass House Villa". There are two rental apartments with four units each.

Masstown is just 20 minutes away from Truro where the regional hospital is located. A new building, to be named Colchester East Hants Health Centre, is currently under construction, to be completed in 2012.

POINTS OF INTEREST

THE SURROUNDING COMMUNITIES

The Upper Londonderry Pastoral Charge is near the town of Truro and about a 15 minute drive from Debert and Masstown and about 20 minutes from Glenholme. Trans Canada Highway 104 links the communities to Truro as well as the major centers of Halifax, (1 hr.), and Moncton, (1.5 hrs.). Train service is available from Truro and air service from both Halifax and Moncton. An inter-provincial bus service is accessible in Truro as well.

Most services for day to day living can be found in Truro. Most of the larger department chains and the two main grocery chains are within the town. There is also a good mix of retail franchises and local retail outlets in both the downtown core and the two main shopping complexes. The town and surrounding area have a stable economy with no dominant employer. Due to its central location, Truro has a number of distribution outlets, transportation and heavy equipment companies in addition to light manufacturing.

Truro also hosts excellent educational facilities. One of the largest high schools in the Province offers a full range of courses and extra curricular activities not normally found in communities of this size. A community college offers a selection of post secondary training. The Nova Scotia Agricultural College offers full degrees and transferable credits with an emphasis on life sciences. The local public library and nearby historical museum offer a number of programs for life long learning.

A new state of the art regional hospital is currently under construction on the outskirts of Truro which will further the present hospital's diagnostic, routine surgery and traditional services. Family physicians are more abundant than most communities and routine matters can be treated at a Walk-In clinic. The town also has a number of medical specialists. Truro has been drawing retirees to the area for many years due to its central location, services and low crime rate. It follows that Truro has a growing nursing home industry with three large complexes and a number of smaller sites.

In addition to the recreational facilities on the Charge, the Truro area has four additional golf courses, a rink, public swimming pool and a host of private gymnasiums as

well as current construction of a civic centre to be completed in 2012. The town has a number of hiking trails for casual walking and biking. The nearby Cobequid Mountains have a growing network of more rigorous trails. Public beaches are located about 45 minutes north on the Northumberland Strait.

Truro has long been an arts friendly community. There are several opportunities for those wishing to participate in music or live theatre. A newly opened performing arts center brings in a wide variety of performers throughout the year in addition to concerts randomly held at the local colleges and high school.

More specific needs and tastes can be met in the Halifax region which is about one hour south of the Charge. This is the largest retail area east of Montreal containing practically all retail stores found in larger cities. The city has several universities and trade schools as well as the Atlantic School of Theology. A large hospital complex hosts a variety of medical specialists and serves the Maritime Provinces in a number of specialties.

Tatamagouche Centre, formerly Atlantic Christian Training Centre, (45 min. north) has long associations with the United Church and offers many programs of interest to people of faith throughout the year. Both Camp MacLennan, a United Church camp shared with Truro and Pictou Presbyteries, as well as Berwick Camp are within a two hour drive of this Pastoral Charge.

Profile #2

UPPER LONDONDERRY PASTORAL CHARGE

The Upper Londonderry Pastoral Charge is the oldest pastoral charge in Canada with a settled minister in 1771. There is much history here because the Acadians had their main church here long before the English settled. There are still remnants of French Acadian artifacts to be seen. This Pastoral Charge is part of Truro Presbytery, the oldest Presbytery in Canada. Truro Presbytery is part of Maritime Conference.

The Upper Londonderry Pastoral Charge currently has $\frac{3}{4}$ time ministry personnel serving three preaching points: Erskine United, Glenholme; Masstown United, Masstown; and Debert United, Debert.. Each point is within ten minutes drive of each other. The manse is

centrally located in Masstown. We are currently using a modified Council system which came into effect at our annual meeting of February 2011. (see chart page 13)

Within our Charge we have Sunday School, bible study, choirs and organists in each church, UCW, DGM Men's Club, and active stewards. We currently hold two services every Sunday, one in Glenholme and a rotating service between Debert and Masstown. We follow the lectionary and the readings are listed on our Church Calendar which is created at the Church office and also lists regular meetings, special events, etc. for the year. Summer services see all three points coming together for one service on the Charge for the months of July and August.

All special services, ie: Easter Sunrise, Christmas Eve etc. are on a rotating basis between each point on the Charge. All Charge meetings also rotate between the three churches. We host an annual Strawberry & Salad Supper which is a Charge event, and the money raised goes to Manse upkeep. Each Church hosts pot luck suppers, yard sales etc. to help defray costs of their buildings.

In each of our Churches there are UCW groups that meet monthly. A Charge Men's Club (DGM Men's Club) meets once a month for breakfast at a nearby restaurant. Sunday School is every week rotating between Debert and Masstown churches. There are Presbytery delegates, one for each point on the Charge and also M&S enthusiasts. A benevolent fund is in place to help those in need and it is used at the minister's discretion.

UPPER LONDONDERRY PASTORAL CHARGE MISSION STATEMENT

The mission of the Upper Londonderry Pastoral Charge is to serve God through Christ, locally and throughout the world; by acceptance of all God's peoples, by caring for one another, sharing in Christian fellowship, teaching God's truth, singing God's praises and witnessing to God's presence in life, in death, in life beyond death.

Profile #3

OUR CHURCH RESOURCES:

All three of our Churches are looped for the hearing impaired. Each has both an organ and a piano and Voices United is used in all three Churches. There is a sound system in each Church building. Each sanctuary is wheel chair accessible. There is an organist and/or pianist on all points of the Pastoral Charge. Each of our churches has kitchen and washroom facilities.

We have a central treasurer plus a treasurer for each point on the Charge.

There is a paid part-time secretary who comes in once a week to do up the bulletins etc. at the office in the Church manse. We are computer literate and the bulletins are done on the office computer (equipped with high-speed internet) and copied on the photocopier/printer or posters done on the ink-jet printer which is also in the main office. Bulletins, paper, and other office supplies are kept in the downstairs office where the filing cabinets are located.

Yoke Centre is a music library conveniently located at Settle-In just minutes from Erskine Church. The website is www.seasidehighspeed.com/~settle

Useful Websites:

Truro Presbytery: www.truropresbytery.byethost8.com

NS Government: www.gov.ns.ca

Tourism: www.centralnovascotia.com

Colchester County: www.colchester.ca

Truro: www.truro.ca

Regional Development (CoRDA): www.wherebusinessmoves.ca

Masstown Market: www.masstownmarket.com

OUR MANSE:

Our manse is located in Masstown across from the Masstown United Church on the Masstown Road. It is a two-story dwelling with a detached garage and circular drive. The front step is made of cement and there are only three steps up to the front door. The back door leads into the laundry room. There is a clothes line off the back step.

On the main floor are the kitchen, dining room, living room, laundry room, half bath, and the den/Church office. The living room picture window looks out on a large back yard. On the second floor there are four bedrooms and a full bath.

The church secretary comes in once a week to do up the bulletins, etc. in the main floor office. In the basement there is another large office where the supplies are kept plus extra shelving and space. It has an oil furnace and electric hot water heater as well as a pump for the well.

All buildings and appliances etc. are well maintained by the Manse committee.

Population Statistics for the Upper Londonderry Pastoral Charge Area

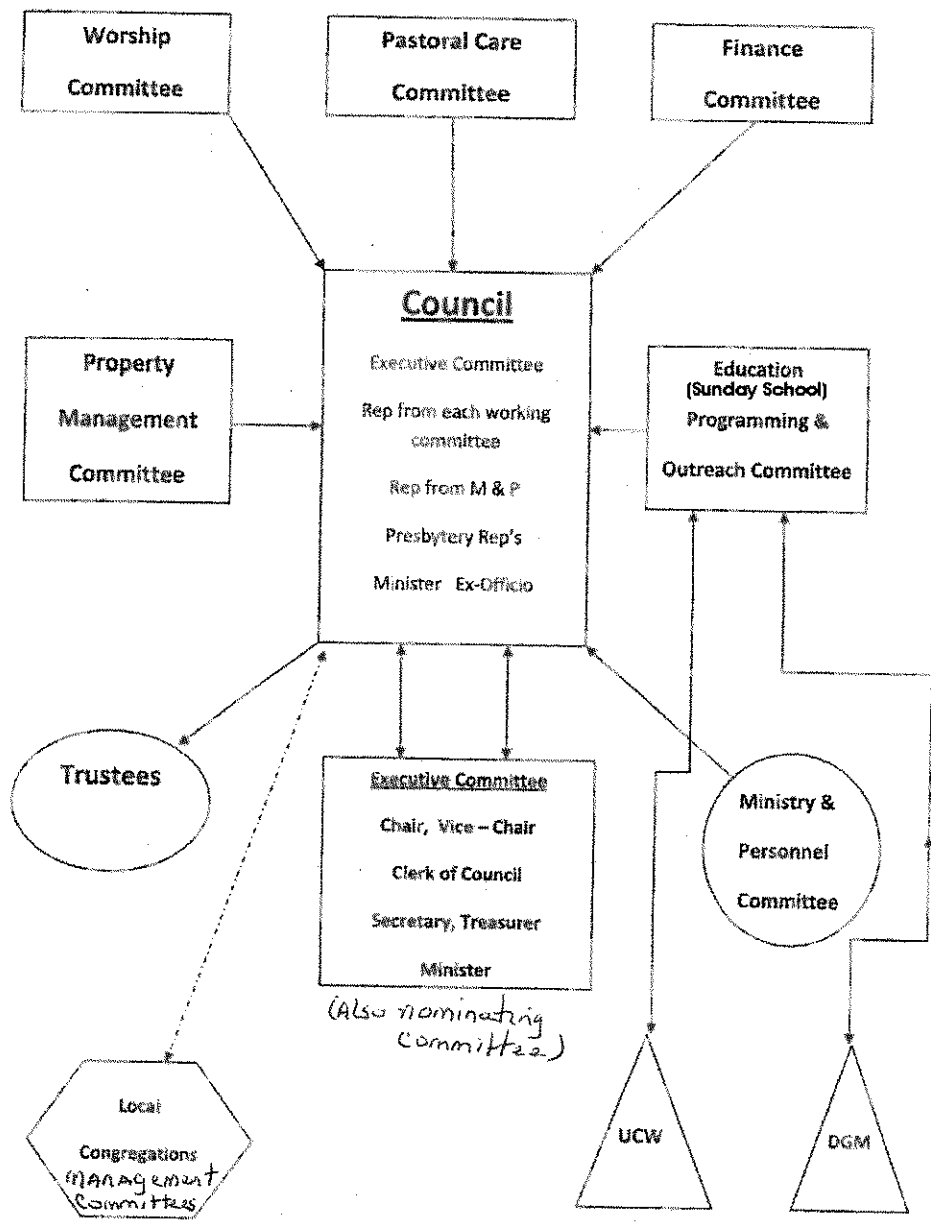
Statistical demographic information has been included or appended with this pastoral charge description. The information, developed by StatsCan, is available at www.gov.ns.ca/finance/communitycounts/summary. Of interest are the Debert Statistical Summary and the Glenholme Statistical Summary. The Debert Statistical summary area conforms pretty well to the area served by the Debert United Church. Not so for the Glenhome summary which, in addition to the target areas of Glenholme and Masstown (which are served by the other two churches of the charge), is based on information derived from many other small communities outside the charge area. Nonetheless, there is a consistency in the demographic picture presented by the two summaries that would lead one to say that the Glenhome summary gives an approximation of Masstown and Glenhome's population profiles. The salient trends are that (1) Debert population is holding and increasing slightly ... as, incidentally, is that of Masstown if it were excerpted from the general population decline of West Colchester, (2) The population of pre-school age children and young adults is declining, (3) the absolute and relative numbers of older people (55 years and up) is increasing markedly from census to census ...there is a

general "greying" of the local population. This data may have implications for a minister considering choosing to work here and for the minister and charge in developing reasonable expectations of the church's support base and "draw".

Profiles #4+5

The congregation has outlined the kind of ministry personnel needed to best serve our Pastoral Charge. This person will:

- Be a ministry personnel able to offer word and sacrament in a meaningful way
- Able to convey an inspiring and spiritual message
- Able to link the scriptures to everyday life
- Provide children's time in worship
- Able to share leadership with a pastoral care team
- Be approachable, sincere, open-minded and patient.
- Able to communicate and work with all age groups
- Lead in periodic bible/religious studies
- Act as a support and resource for Sunday School
- Be a good resource for our spiritual needs
- Show an interest and participate in the life of our communities
- Willingness to share ecumenically with communities – Remembrance Day
- To lead Nursing Home services from time to time
- Enthusiasm for visitation
- Able to show compassion in dealing with people having a variety of needs
- Follow up with families after funerals or crisis situations
- Be able to implement other people's talents in the work of the church.
- Be able to encourage and support lay leadership
- Co-ordinate bulletin content with the secretary
- Participate in Presbytery and Conference
- Be open for an annual review in October/November in conjunction with the M&P committee



**Upper Londonderry Pastoral Charge
2011 Budget**

	Three Quarter Ministry _12 Mon.			Total
	2011	Jan - June	July - Dec	
Expenditures				
Personnel				
Clergy salary	29,639	14,820		
Clergy supply	300	150	5,000	
Employee benefits	2,446	1,223		
Travel	7,885	3,943		
CE and book	1,250	625		
Administrative assistance	2,175	1,088	1,088	
	<u>42,700</u>	<u>21,848</u>	<u>6,088</u>	<u>27,955</u>
Manse				
Property tax	975			
Insurance	1,350			
Electricity	1,150			
Fuel	1,600			
Repairs	1,500			
Transfer to reserve				
	<u>6,575</u>	<u>3,288</u>	<u>3,288</u>	<u>6,575</u>
Office				
ADP	250	125	-	
Telecommunications	1,300	650	650	
Supplies	1,000	500	500	
Photocopier	650	325	325	
Computer	300	150	150	
	<u>3,500</u>	<u>1,750</u>	<u>1,625</u>	<u>3,375</u>
Other				
Bulletins	500	250	250	
Conference and Presbytery	2,860	1,430	1,430	
Worship materials	400	200	200	
CE grants	400	200	200	
Christian Counselling Min	300	150	150	
Misc	230	115	115	
	<u>4,690</u>	<u>2,345</u>	<u>2,345</u>	<u>4,690</u>
	<u>57,465</u>	<u>29,230</u>	<u>13,345</u>	<u>42,575</u>
Revenue				
Congregational support				
Debert	23,505	42%	11,962	5,290
Glenholme	16,790	30%	8,544	3,779
Masstown	15,670	28%	7,974	3,527
Fund raising	1,500		750	750
	<u>57,465</u>		<u>29,230</u>	<u>13,345</u>

Upper Londonderry Pastoral Charge
 Consolidated Financial Statements
 Year Ended December 31, 2010

	<u>Debert</u>	<u>Erskine</u>	<u>Masstown</u>	<u>Total of Congregations</u>	<u>Pastoral Charge</u>	<u>Grand Total</u>
Revenue						
Envelopes - regular	19,226	17,188	15,570	51,984		51,984
Envelopes - building	125	-	3,835	3,960		3,960
Plate offerings	376	64	351	790		790
Rentals	200	200	430	830		830
Fund raising	2,210		6,148	8,358	1,191	9,549
UCW	-	500	788	1,288		1,288
HST rebates	274		276	550		550
Investment income	-	4,600	-	4,600		4,600
Transfer from reserves	-	3,000	-	3,000		3,000
	<u>22,410</u>	<u>25,552</u>	<u>27,398</u>	<u>75,360</u>	<u>1,191</u>	<u>76,551</u>
Expenditures						
Buildings						
Heating	3,126	3,003	1,725	7,854	1,369	9,223
Electricity	527	567	830	1,924	1,065	2,989
Insurance	1,132	2,423	2,241	5,796	1,291	7,087
Taxes					944	944
Maintenance	249	857	358	1,464	1,768	3,232
	<u>5,034</u>	<u>6,850</u>	<u>5,154</u>	<u>17,038</u>	<u>6,437</u>	<u>23,475</u>
Ministry						
Pastoral charge	23,499	16,785	15,666	55,950	55,950	-
Personnel					37,020	37,020
Office and sundry	147	351		498	2,236	2,734
Telephone	-	452	-	452	1,169	1,621
Conference/Presbytery					2,820	2,820
Other	-	138	260	398	740	1,138
	<u>28,680</u>	<u>24,576</u>	<u>21,080</u>	<u>74,336</u>	<u>5,528</u>	<u>68,808</u>
Surplus, (deficit), for the year	6,270	976	6,318	1,025	6,719	7,742
Surplus, beginning of year	<u>11,671</u>	<u>5,321</u>	<u>10,825</u>	<u>27,817</u>	<u>15,341</u>	<u>43,158</u>
Surplus, end of year	<u>5,401</u>	<u>6,297</u>	<u>17,143</u>	<u>28,840</u>	<u>22,060</u>	<u>50,900</u>
Identifiable givers	<u>22</u>	<u>12</u>	<u>19</u>			<u>53</u>
Trusts	<u>121,532</u>	<u>174,831</u>	<u>-</u>			<u>296,363</u>

Profile #6

TERMS

That Truro Presbytery declare Upper Londonderry Pastoral Charge vacant effective December 31, 2011 and that a search committee be formed to search for full time ministry personnel.

